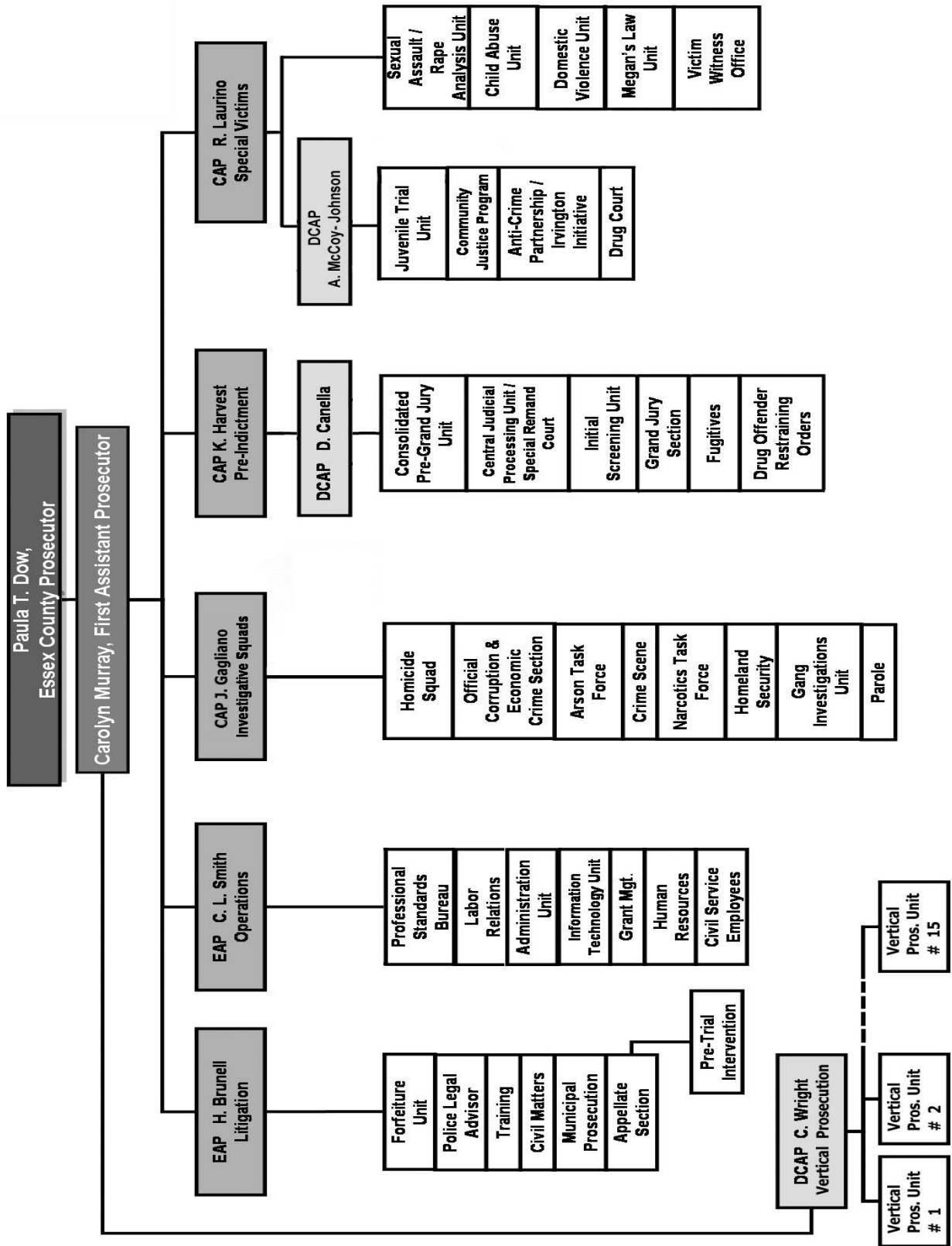
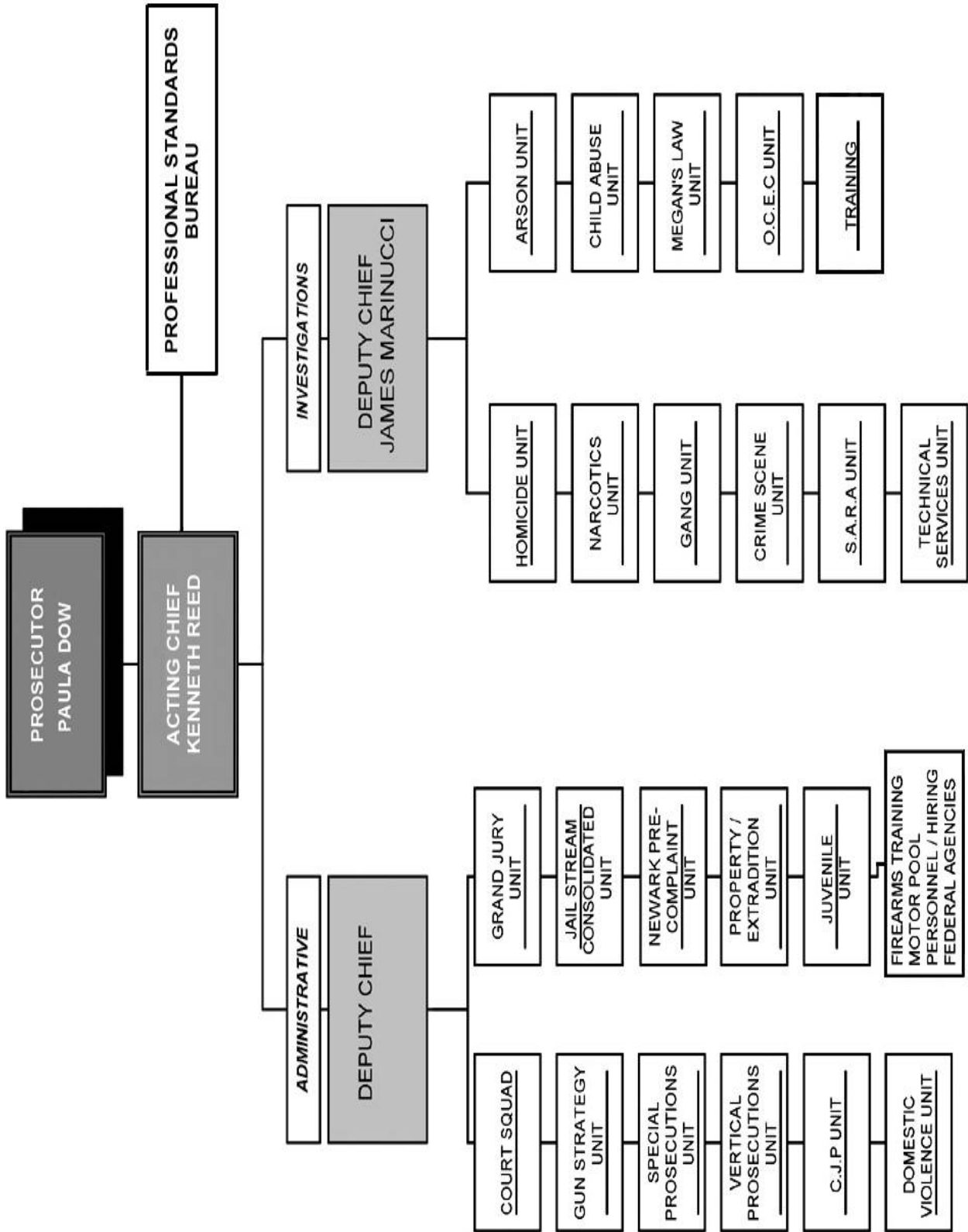


# TABLE OF ORGANIZATION—LEGAL



# TABLE OF ORGANIZATION—INVESTIGATIVE



**Indictment and Accusation - Total Number of Filings,  
and 1st and 2nd Degree Filings**

<b>Court Year:</b>	<b>2000</b>	<b>2001</b>	<b>2002</b>	<b>2003</b>	<b>2004</b>	<b>2005</b>	<b>2006</b>	<b>2007</b>
<b>County</b>	All Filings <i>1st / 2nd</i>	All Filings <i>1st / 2nd</i>	All Filings <i>1st / 2nd</i>	All Filings <i>1st / 2nd</i>	All Filings <i>1st / 2nd</i>	All Filings <i>1st / 2nd</i>	All Filings <i>1st / 2nd</i>	All Filings <i>1st / 2nd</i>
Atlantic	3,501 733	3,271 774	3,201 783	3,046 809	3,112 719	3,338 882	3,511 889	3,560 824
Bergen	3,038 532	3,510 620	3,254 548	3,311 770	2,831 703	2,997 799	2,694 794	2,776 720
Burlington	1,087 282	1,699 331	2,003 417	1,845 410	1,734 359	1,810 376	2,094 405	2,416 508
Camden	4,531 734	4,356 867	4,600 1,018	4,881 1,034	5,407 1,195	5,498 1,205	5,077 1,279	4,438 1,084
Cape May	887 199	1,086 241	1,080 309	948 260	1,047 242	1,066 230	1,174 256	1,131 254
Cumberland	1,302 219	1,317 301	1,351 296	1,415 274	1,507 290	1,355 275	1,441 276	1,302 322
<b>Essex</b>	<b>5,853</b> <b>2,690</b>	<b>8,154</b> <b>3,907</b>	<b>7,702</b> <b>3,782</b>	<b>7,151</b> <b>3,608</b>	<b>6,841</b> <b>3,482</b>	<b>5,154</b> <b>2,790</b>	<b>6,234</b> <b>3,148</b>	<b>7,110</b> <b>3,455</b>
Gloucester	1,025 200	1,029 167	886 173	1,294 305	1,158 245	1,198 238	1,309 184	1,324 213
Hudson	4,133 1,144	4,742 1,375	4,607 1,432	4,991 1,600	4,200 1,431	3,980 1,349	4,140 1,398	4,063 1,639
Hunterdon	359 45	417 48	402 46	370 47	355 33	567 84	498 74	481 72
Mercer	1,964 638	2,505 728	2,478 877	2,327 849	2,022 556	2,460 669	2,681 805	2,874 745
Middlesex	2,564 731	2,615 739	2,499 649	2,759 811	2,749 897	2,593 916	2,534 830	2,934 931
Monmouth	2,919 610	2,998 583	2,921 561	3,340 640	3,541 651	3,785 675	3,338 615	3,463 578
Morris	1,874 237	1,854 233	1,704 259	1,643 287	1,496 242	1,856 332	1,792 282	1,810 278
Ocean	2,236 341	2,186 327	1,970 286	1,872 302	2,310 346	1,951 333	2,152 387	2,661 331
Passaic	3,022 600	3,077 701	3,230 884	2,833 712	3,511 833	3,921 1,022	3,643 926	3,336 1,010
Salem	589 85	761 132	695 123	810 157	621 106	611 125	789 150	891 175
Somerset	752 122	823 172	837 111	911 137	1,024 172	1,128 192	1,131 210	1,082 173
Sussex	483 63	490 30	490 58	390 45	406 42	488 39	444 32	545 58
Union	3,406 980	3,816 1,041	3,328 904	2,792 737	3,260 962	3,534 967	3,226 820	3,171 709
Warren	475 68	519 50	497 42	486 57	479 62	467 64	488 55	524 67
<b>State Total</b>	<b>46,000</b> <b>11,253</b>	<b>51,225</b> <b>13,367</b>	<b>49,735</b> <b>13,558</b>	<b>49,415</b> <b>13,851</b>	<b>49,611</b> <b>13,568</b>	<b>49,757</b> <b>13,562</b>	<b>50,305</b> <b>13,815</b>	<b>51,692</b> <b>14,129</b>

*All report data taken from NJ AOC Promis Gavel database.  
Court Year basis, i.e. from July 1 through June 30 (e.g. CY 2004 is from 7/1/2003 to 6/30/2004).*

<b>Indictment and Accusation - % 1st and 2nd Degree of yearly County Filings</b>								
<b>County</b>	<b>2000</b>	<b>2001</b>	<b>2002</b>	<b>2003</b>	<b>2004</b>	<b>2005</b>	<b>2006</b>	<b>2007</b>
Atlantic	21%	24%	24%	27%	23%	26%	26%	23%
Bergen	18%	18%	17%	23%	25%	27%	29%	26%
Burlington	26%	19%	21%	22%	21%	21%	20%	21%
Camden	16%	20%	22%	21%	22%	22%	25%	24%
Cape May	22%	22%	29%	27%	23%	22%	21%	22%
Cumberland	17%	23%	22%	19%	19%	20%	19%	25%
<b>Essex</b>	<b>46%</b>	<b>48%</b>	<b>49%</b>	<b>50%</b>	<b>51%</b>	<b>54%</b>	<b>50%</b>	<b>49%</b>
Gloucester	20%	16%	20%	24%	21%	20%	14%	16%
Hudson	28%	29%	31%	32%	34%	34%	34%	40%
Hunterdon	13%	12%	11%	13%	9%	15%	15%	15%
Mercer	32%	29%	35%	36%	27%	27%	30%	26%
Middlesex	29%	28%	26%	29%	33%	35%	33%	32%
Monmouth	21%	19%	19%	19%	18%	18%	18%	17%
Morris	13%	13%	15%	17%	16%	18%	16%	13%
Ocean	15%	15%	15%	16%	15%	17%	18%	15%
Passaic	20%	23%	27%	25%	24%	26%	25%	30%
Salem	14%	17%	18%	19%	17%	20%	19%	20%
Somerset	16%	21%	13%	15%	17%	17%	19%	16%
Sussex	13%	6%	12%	12%	10%	8%	7%	11%
Union	29%	27%	27%	26%	30%	27%	25%	22%
Warren	14%	10%	8%	12%	13%	14%	11%	13%
<b>State Total</b>	<b>24%</b>	<b>26%</b>	<b>27%</b>	<b>28%</b>	<b>27%</b>	<b>27%</b>	<b>27%</b>	<b>27%</b>

*All report data taken from NJ AOC Promis Gavel database.  
Court Year basis, i.e. from July 1 through June 30 (e.g. CY 2004 is from 7/1/2003 to 6/30/2004).*